

(1) **EC-Certificate of Conformity**



(2) **Equipment and Protective Systems Intended for Use in Potentially Explosive Atmospheres – Directive 94/9/EC**

(3) **EC-Certificate of Conformity Number:**

**EPS 09 ATEX 1 236 X**

**Revision: 3**

(4) **Equipment:** QS-Series: QS3.241-A1; QS5.241-A1; QS5.DNET-A1; QS10.121-A1; QS10.241-A1; QS10.301-A1; QS10.481-A1; QS10.DNET-A1; QS20.241-A1; QS20.244-A1; QS20.361-A1; QS20.481-A1

(5) **Manufacturer:** PULS GmbH

(6) **Address:** Arabellastr. 15, 81925 München, Germany

(7) This equipment and any acceptable variation thereto are specified in the schedule to this certificate and the documents therein referred to.

(8) Bureau Veritas Consumer Products Services Germany GmbH, Notified Body No. 2004 in accordance with Article 9 of the Council Directive 94/9/EC of March 23<sup>rd</sup> 1994, certifies, based on a voluntary testing, that this equipment has been found to comply with the Essential Health and Safety Requirements relating to the design and construction of equipment and protective systems intended for use in potentially explosive atmospheres, given in Annex II of the Directive. The examination and test results are recorded in the confidential report 09TH0448.

(9) Compliance with the Essential Health and Safety Requirements has been assured by compliance with:


**EN 60079-0:2012 + A11:2013**

**EN 60079-15:2010**

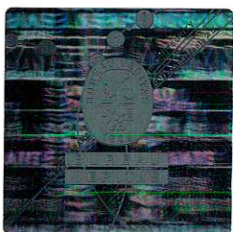
(10) If the sign "X" is placed after the certificate number, it indicates that the equipment is subject to special conditions for safe use specified in the schedule to this certificate.

(11) This EC-Certificate of Conformity relates only to the design and the construction of the specified equipment in accordance with Directive 94/9/EC. Further requirements of this Directive apply to the manufacture and supply of this equipment.

(12) The marking of the equipment shall include the following:

 II 3G Ex nA nC IIC T3 Gc

 II 3G Ex nA nC IIC T4 Gc



Certification department of explosion protection

Nürnberg, January 21, 2016

  
D. Zitzmann

(13)

## Annexe

(14) **EC-Certificate of Conformity EPS 09 ATEX 1 236 X**

(15) Description of equipment:

Built-in power supply

Revision 1: update from EN 60079-0:2006 and EN 60079-15:2005 to  
EN 60079-0:2009 and EN 60079-15:2010

Revision 2: update from EN 60079-0:2009 to EN 60079-0:2012 + A11:2013

Revision 3: Minor product modification

Electric data:

<b>QS3.241-A1</b>	Input: 100-240Vac $\pm 15\%$ 50-60Hz 1.8-1A Output: 24Vdc 3.4-3A
<b>QS5.241-A1</b>	Input: 100-240Vac -15% / +10% 50-60Hz 1.4-0.65A Output: 24Vdc 5-4.5A
<b>QS5.DNET-A1</b>	Input: 100-240Vac -15% / +10% 50-60Hz 1.1-0.5A Output: 24Vdc 3.8A
<b>QS10.121-A1</b>	Input: 100-240Vac $\pm 15\%$ 50-60Hz 2.1-0.9A Output: 12-15Vdc 15-12A
<b>QS10.241-A1</b>	Input: 100-240Vac $\pm 15\%$ 50-60Hz 2.8-1.2A Output: 24-28Vdc 10-9A
<b>QS10.301-A1</b>	Input: 100-240Vac $\pm 15\%$ 50-60Hz 2.8-1.2A Output: 28-32Vdc 8.6-7.5A
<b>QS10.481-A1</b>	Input: 100-240Vac $\pm 15\%$ 50-60Hz 2.8-1.2A Output: 48-56Vdc 5-4.3A
<b>QS10.DNET-A1</b>	Input: 100-240Vac $\pm 15\%$ 50-60Hz 2.3-1.0A Output: 24-24.5Vdc 8A
<b>QS20.241-A1</b>	Input: 100-240Vac $\pm 15\%$ 50-60Hz 5.4-2.4A Output: 24-28Vdc 20-17.1A
<b>QS20.244-A1</b>	Input: 200-240Vac $\pm 15\%$ 50-60Hz 4.8A Output: 24-28Vdc 20-17.1A
<b>QS20.361-A1</b>	Input: 100-240Vac $\pm 15\%$ 50-60Hz 5.4-2.4A Output: 36-42Vdc 13.3-11.4A
<b>QS20.481-A1</b>	Input: 100-240Vac $\pm 15\%$ 50-60Hz 5.4-2.4A Output: 48-55Vdc 10-8.7A





(16) Test report: 09TH0448



(17) Special conditions for safe use:

The rated ambient temperature range is from -25°C to +60°C.  
The power supply must be installed in an IP54 enclosure or cabinet in the final installation. The enclosure / cabinet must comply with the requirements of EN 60079-15:2010.

(18) Essential health and safety requirements:

Met by standards.

Certification department of explosion protection

Nürnberg, January 21, 2016



D. Zitzmann